

Elk Mountain Ranch  
307-348-7140

**NO  
TRESPASSING**

Elk Mountain Ranch  
307-348-7140

Streambeds, Game Trails &  
Corner Crossings: Public Access & Private  
Property





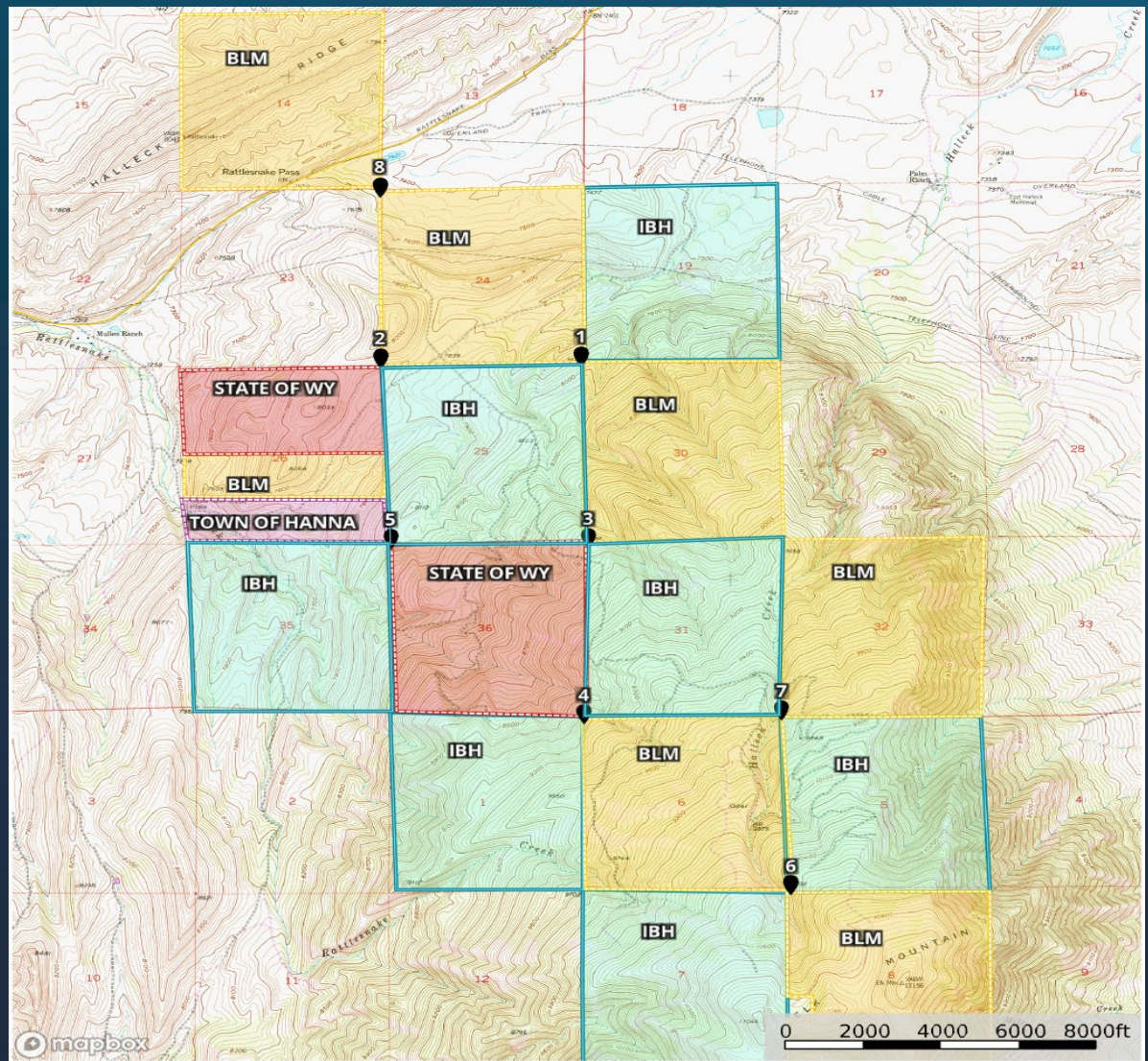
**Ryan Semerad,**  
*The Fuller & Semerad Law  
Firm*







**Karen Budd-Falen,**  
*Senior Partner, Budd-Falen  
Law Offices L.L.C.*

**A bundle of sticks . . . .**





-  Town of Hanna
-  BLM
-  Private
-  State of WY



Feb 5, 2022 at 10:41:34 AM  
Rawlins WY 82301  
United States





(From L to R)  
Brad Cape  
John Slowensky  
Phil Yeomans  
Zach Smith





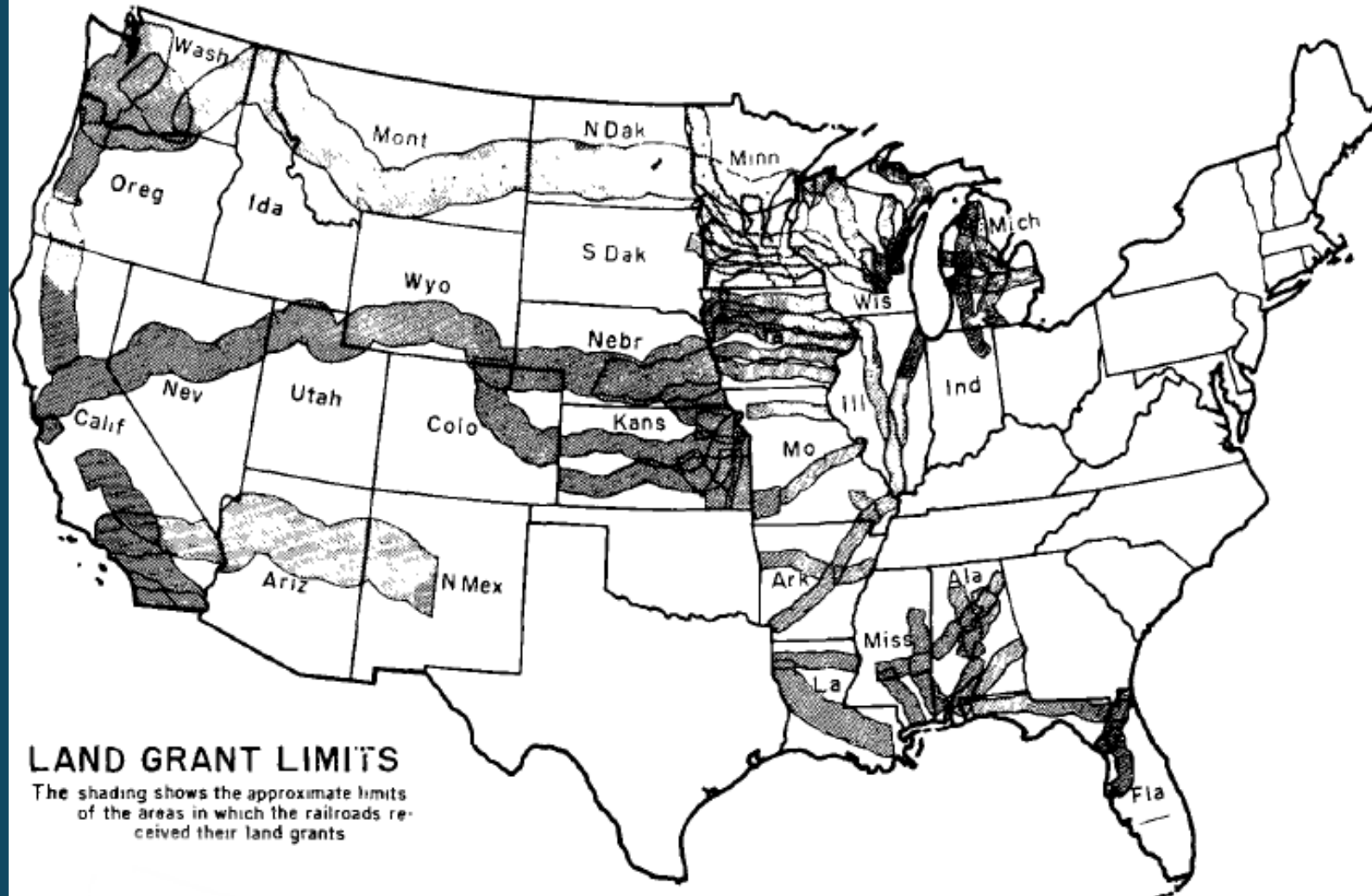








## FEDERAL LAND GRANTS FOR RAILROADS





“Corner crossing” or  
“corner locking”?



The end of free ranging.

Black letter trespass.

Suprajacent airspace; *Causby*.

*Leo Sheep Co.*

Public policy; judicial restraint.





Source: Public Domain in the U.S.



Custom and tradition.

Supreme Court;  
8<sup>th</sup> Cir./10<sup>th</sup> Cir. caselaw.

Federal statutes.

Federal regulations.





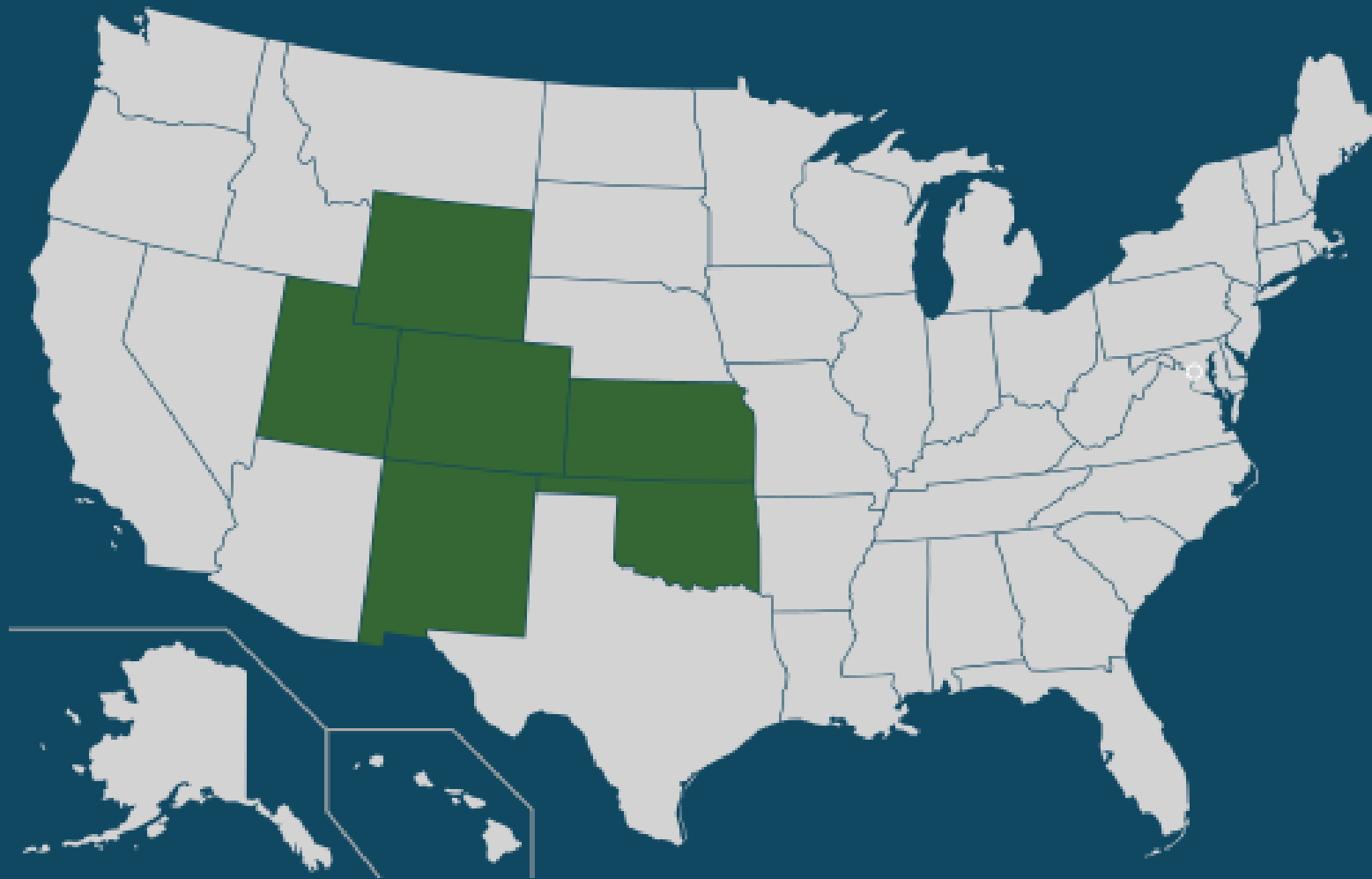
Source: Graham Horn





Source: Dtobias, CC BY-SA 3.0 <<https://creativecommons.org/licenses/by-sa/3.0/>>, via Wikimedia Commons





Source: MarginalCost, CC BY-SA 4.0 <<https://creativecommons.org/licenses/by-sa/4.0/>>, via Wikimedia Commons

# Accessing Streams Across Private Property



Source: Bureau of Land Management, CC BY 2.0  
<<https://creativecommons.org/licenses/by/2.0>>, via Wikimedia Commons