



**Congressional
Research Service**

Informing the legislative debate since 1914

PILT (Payments in Lieu of Taxes): Somewhat Simplified

M. Lynne Corn

Specialist in Natural Resources Policy

December 28, 2015

Congressional Research Service

7-5700

www.crs.gov

RL31392

Summary

Under federal law, local governments (usually counties) are compensated through various programs for reductions to their property tax bases due to the presence of most federally owned land. Federal lands cannot be taxed but may create a demand for services such as fire protection, police cooperation, or longer roads to skirt the federal property. Some compensation programs are run by a specific agency and apply only to that agency's land. This report addresses only the most widely applicable program, which is called *Payments in Lieu of Taxes* (PILT; 31 U.S.C. §§6901-6907) and is administered by the Department of the Interior (DOI). Under the statute, eligible lands consist of those in the National Park System (NPS), National Forest System (NFS), or Bureau of Land Management (BLM); lands in the National Wildlife Refuge System (NWRS) if they are withdrawn from the public domain; lands dedicated to the use of federal water resources development projects; dredge disposal areas under the jurisdiction of the U.S. Army Corps of Engineers; lands located in the vicinity of Purgatory River Canyon and Piñon Canyon, Colorado, that were acquired after December 31, 1981, to expand the Fort Carson military reservation; lands on which are located semi-active or inactive Army installations used for mobilization and for reserve component training; and certain lands acquired by DOI or the Department of Agriculture under the Southern Nevada Public Land Management Act (P.L. 105-263).

The authorized level of PILT payments is calculated using a complex formula. No precise dollar figure can be given in advance for each year's PILT authorized level. Five factors affect the calculation of a payment to a given county: (1) the number of acres eligible for PILT payments, (2) the county's population, (3) payments in prior years from other specified federal land payment programs, (4) state laws directing payments to a particular government purpose, and (5) the Consumer Price Index as calculated by the Bureau of Labor Statistics.

Before 2008, annual appropriations were necessary to fund PILT. However, beginning with the FY2008 payment and continuing through FY2012, a provision in the Emergency Economic Stabilization Act of 2008 (P.L. 110-343) for mandatory spending ensured that all counties would receive 100% of the authorized payment. The Moving Ahead for Progress in the 21st Century Act (P.L. 112-141) extended mandatory spending to FY2013, although there was a later sequestration of 5.1% for that year. PILT's mandatory spending was renewed for another year in the Agricultural Act of 2014 (P.L. 113-79), resulting in an FY2014 payment of \$436.9 million.

For FY2016, P.L. 114-113 provides \$452 million for PILT. The formula to calculate the exact authorized amount cannot be used until background data are provided by federal agencies in spring 2016, but the amount that is provided is likely to be near full funding.

For FY2015, Congress approved \$372 million in discretionary funding for PILT in the Consolidated and Further Continuing Appropriations Act, 2015 (P.L. 113-235) and \$33 million in mandatory spending in the Carl Levin and Howard P. "Buck" McKeon National Defense Authorization Act for Fiscal Year 2015 (P.L. 113-291). The latter measure also included another \$37 million in mandatory spending to be made available on October 1, 2015—the start of FY2016; this figure was subject to sequestration of 6.8%, reducing the amount to \$34.5 million. The resulting total of \$439.5 million provided 97.3% of the \$451.5 million that would be required for full funding.

Over the next few years, the broader debate for Congress might be summarized as four decisions. Congress may decide whether to (1) approve PILT funding through future extensions of mandatory spending (either temporary or permanent); (2) fund PILT through annual appropriations bills; (3) provide full funding or reduce the payments, perhaps through the annual

appropriations process or by changing the PILT formula; and (4) add or subtract any lands to the list of those now eligible for PILT payments.

Since the creation of PILT in 1976, various other changes in the law have been proposed. One proposal has been to include additional lands under the PILT program, particularly Indian lands. Other lands also have been mentioned for inclusion, such as those of the National Aeronautics and Space Administration and the Departments of Defense and Homeland Security. Some counties would like to revisit the compensation formula to emphasize a payment rate more similar to property tax rates. Finally, some have argued that all lands in the NWRS should be eligible for PILT, rather than limiting PILT payments to lands reserved from the public domain while excluding acquired lands from PILT payments.

Contents

Introduction	1
PILT Legislation: The 110 th to 113 th Congresses	4
PILT Legislation: FY2014.....	5
PILT Legislation: FY2015.....	5
PILT Legislation: FY2016.....	6
How PILT Works: Five Steps to Calculate Payment	6
Step 1. How Many Acres of Eligible Lands Are There?	6
Step 2. What Is the Population of the County?	8
Step 3. Are There Prior-Year Payments from Other Federal Agencies?	8
Step 4. Does the State Have Pass-Through Laws?.....	9
Step 5. What Is This Year’s Consumer Price Index?.....	10
Putting It All Together: Calculating a County’s Payment.....	11
National Totals	13
Current Issues.....	13
Inclusion of Indian Lands.....	14
Inclusion of Urban Lands and Tax Equivalency	15
National Wildlife Refuge System Lands.....	16
County Uncertainty and Fiscal Effects on Counties	16

Figures

Figure 1. Total PILT Payments, FY1993-FY2016: Appropriations in Current and Inflation-Adjusted 2014 Dollars	3
Figure 2. Total PILT Payments, FY1993-FY2016: Authorized Amount and Appropriation	4
Figure 3. Ceiling Payments Based on County Population Level, FY2015	8
Figure 4. PILT Payment Level as a Function of Specific Prior Payments (FY2015).....	9
Figure 5. Steps in Calculating PILT for Eligible Federal Lands.....	12

Tables

Table 1. Authorized PILT Payments to Selected Urban Counties, FY2015	15
Table 2. NWRS Acres Eligible for PILT in Selected States, FY2014	16
Table A-1. Total PILT Payments, FY1993-FY2016: Appropriations in Current and Inflation-Adjusted 2014 Dollars	18
Table A-2. Total PILT Payments, FY1993-FY2016: Authorized Amount and Appropriations.....	19
Table A-3. Prior-Year Payment Laws That Are Offset Under Next PILT Payment	20

Appendixes

Appendix. PILT Data Tables 18

Contacts

Author Contact Information 22

Introduction

Generally, federal lands may not be taxed by state or local governments unless the governments are authorized to do so by Congress. Because local governments often are financed by property or sales taxes, this inability to tax the property values or products derived from the federal lands may affect local tax bases, sometimes significantly. If the federal government controls a significant share of a county's property, then the revenue-raising capacity of that county may be compromised. Instead of authorizing taxation, Congress usually has chosen to create various payment programs designed to compensate for lost tax revenue. These programs take various forms. Many pertain to the lands of a particular agency (e.g., the National Forest System or the National Wildlife Refuge System).¹ The most wide-ranging payment program is called *Payments in Lieu of Taxes* (PILT).² It is administered by the Department of the Interior (DOI) and affects most acreage under federal ownership. However, most military lands, lands under the Department of Energy (which have their own smaller payment program), lands of the National Aeronautics and Space Administration, and lands of the Department of Homeland Security are not eligible for payments under PILT.³ In FY2015, the PILT program covered 607.0 million acres, or about 94% of all federal land.

The Payments in Lieu of Taxes Act of 1976 (P.L. 94-565, as amended; 31 U.S.C. §§6901-6907) was passed at a time when U.S. policy was shifting from one of disposal of federal lands to one of retention. The policy meant the retained lands would no longer be expected to enter the local tax base at some later date. Because of that shift, Congress agreed with recommendations of a federal commission that if these federal lands were never to become part of the local tax base, some compensation should be offered to local governments (generally counties) to make up for the presence of nontaxable land within their jurisdictions.⁴ Moreover, there was a long-standing concern that some federal lands produced large revenues for local governments, whereas other federal lands produced little or none. Many Members, especially those from western states with a high percentage of federal lands, felt the imbalance needed to be addressed. The resulting law authorizes federal PILT payments to local governments. The payments may be used for any governmental purpose.

¹ For more information on some of these agency-specific payment programs, see CRS Report RL30335, *Federal Land Management Agencies' Mandatory Spending Authorities*, by M. Lynne Corn and Carol Hardy Vincent; and CRS Report R41303, *Reauthorizing the Secure Rural Schools and Community Self-Determination Act of 2000*, by Katie Hoover. The program under the Department of Energy (DOE) is described in U.S. General Accounting Office [now Government Accountability Office], *Energy Management: Payments in Lieu of Taxes for DOE Property May Need to Be Reassessed*, GAO/RCED-94-204, July 18, 1994.

² County-by-county Payments in Lieu of Taxes (PILT) payments are shown in U.S. Department of the Interior, Office of Budget, *Payments in Lieu of Taxes: National Summary Fiscal Year 2015*, 2015; hereinafter referred to as *National Summary*. A similar document is issued every year; each contains tables for payments and acreage by state and county. To query data from the most recent fiscal year, including the October supplement described below, see <https://www.doi.gov/pilt/resources/annual-reports>.

³ A program, commonly referred to as Impact Aid, supports local schools based on the presence of children of federal employees, including military dependents. It provides some support to local governments, and to some extent it compensates for lost property tax revenue when military families live on federally owned land. For more information, see CRS Report RL33960, *The Elementary and Secondary Education Act, as Amended by the No Child Left Behind Act: A Primer*, by Rebecca R. Skinner.

⁴ Public Land Law Review Commission, *One Third of the Nation's Land: A Report to the President and to the Congress*, June 1970, pp. 235-241.

Critics of PILT cite examples of what they view as its idiosyncrasies:

- Although there is no distinction between acquired and public domain lands⁵ for other categories of eligible lands, acquired lands of the Fish and Wildlife Service (FWS) are not eligible for PILT. This provision works to the detriment of many counties in the East and Midwest, where nearly all FWS lands are acquired lands.
- Payments under the Secure Rural Schools (SRS) program⁶ require an offset in the following year's PILT payment for certain lands under the jurisdiction of the Forest Service (FS). However, if the eligible lands are under the jurisdiction of the Bureau of Land Management (BLM), there is no reduction in the next year's PILT payment.⁷
- Certain BLM lands (called the Oregon and California Grant Lands) receive payments that do not require an offset in the following year's PILT payment.⁸
- Some of the "units of general local government" (counties)⁹ that receive large payments have other substantial sources of revenue, and some of the counties that receive small payments are relatively poor.
- A few counties that receive very large payments from other federal revenue-sharing programs (because of valuable timber, mining, recreation, and other land uses) also are authorized to receive a minimum payment (\$0.37 per acre)¹⁰ from PILT, thus somewhat canceling out the goal of evening payments across counties.
- In some counties the PILT payment greatly exceeds the amount the county would receive if the land were taxed at fair market value, whereas in others it is much less.

Given such issues, and the complexity of federal land management policies, consensus on substantive change in the PILT law has been elusive, particularly when Congress has a stated goal of reducing federal expenditures.

⁵ *Acquired lands* are those that the United States obtained from a state or individual. *Public domain lands* generally are those that the United States obtained from a sovereign nation.

⁶ See CRS Report R41303, *Reauthorizing the Secure Rural Schools and Community Self-Determination Act of 2000*, by Katie Hoover. Congress enacted the Secure Rural Schools and Community Self-Determination Act of 2000 (SRS; P.L. 106-393) as a temporary, optional program of payments based on historic, rather than current, revenues.

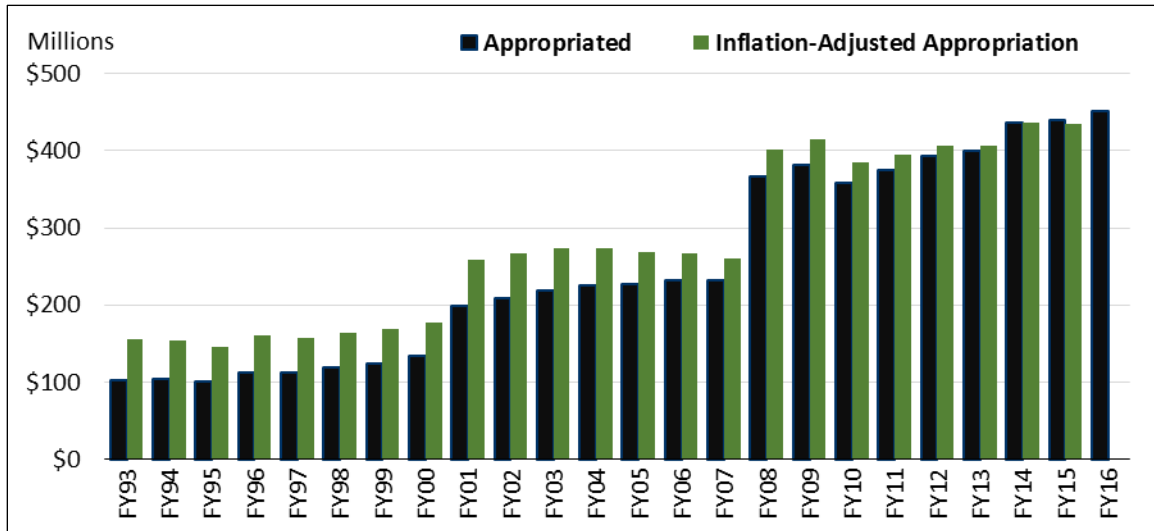
⁷ All Bureau of Land Management (BLM) lands eligible for SRS payments are in Oregon.

⁸ These lands once were granted to a private company for construction of a railroad. When the company violated the contract, the land reverted to the federal government. For more on these lands, see CRS Report R42951, *The Oregon and California Railroad Lands (O&C Lands): Issues for Congress*, by Katie Hoover.

⁹ *Unit of general local government* is defined in the law (31 U.S.C. §6901(2)) as "a county (or parish), township, borough, or city where the city is independent of any other unit of general local government, that (i) is within the class or classes of such political subdivisions in a State that the Secretary of the Interior, in his discretion, determines to be the principal provider or providers of governmental services within the State; and (ii) is a unit of general government as determined by the Secretary of the Interior on the basis of the same principles as were used on January 1, 1983, by the Secretary of Commerce for general statistical purposes" plus the District of Columbia, Puerto Rico, Guam, and the Virgin Islands. For simplicity, the word *county* will be used in the rest of this report to refer to a *unit of general local government*, and *county* must be understood here to be equivalent to the above definition. This shorthand is often used by the Department of the Interior (DOI).

¹⁰ This and subsequent references to payment rates and ceilings are based on FY2015 figures unless otherwise noted.

**Figure I. Total PILT Payments, FY1993-FY2016:
Appropriations in Current and Inflation-Adjusted 2014 Dollars**



Sources: Current dollars from the annual *Payments in Lieu of Taxes: National Summary* reports of the U.S. Department of the Interior’s Office of Budget (hereinafter referred to as *National Summary*). The FY2015 level includes the supplement paid in October 2015. Inflation adjustment is based on chain-type price index. Adjustment for FY2015 is based on the index for the first three quarters of the year. FY2016 is presented in current dollars.

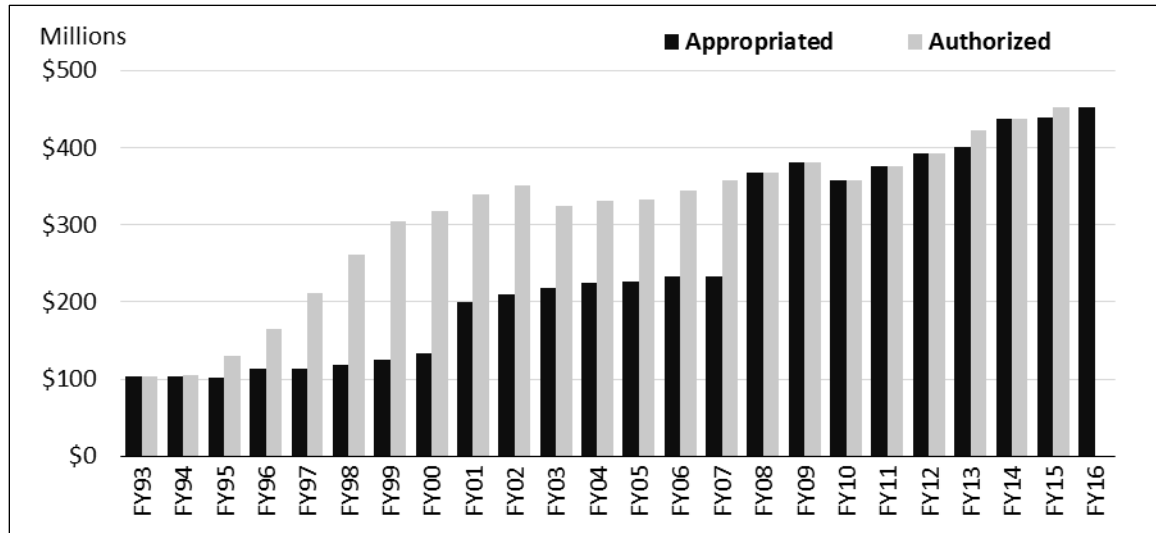
Notes: For the same data in tabular format, see **Table A-1**.

Many of the broader issues of federal compensation to counties that were addressed when PILT was created reemerged over the years. One such issue is the appropriate payment level, which is complicated by erosion of the payments’ purchasing power due to inflation. Until about 1994, the full amount authorized under the law’s formula generally had been appropriated, with a few exceptions such as sequestration under the Gramm-Rudman-Hollings Act (Title II of P.L. 99-177). For many of PILT’s first 15 years, counties held that payments effectively were declining because of inflation. A 1994 amendment (P.L. 103-397) focused on increasing the total payments, building in inflation protection, and making certain additional categories of land eligible.¹¹ The authorized payment level continued to be subject to annual appropriations. **Figure 1** shows a major increase in both the actual and the inflation-adjusted dollars appropriated for PILT from FY1993 to FY2015.¹² The increase in the authorization from the 1990s to the 2000s was not accompanied by a commensurate increase in appropriations. (See **Figure 2**.) The growing discrepancy between appropriations and the rising authorization levels led to even greater levels of frustration among many local governments and prompted intense interest among some Members in increasing appropriations.

¹¹ Other important issues in 1994 were the question of the equity of the payments and the balance struck in the payment formula between (1) heavily and sparsely populated communities; (2) those with federal lands generating large revenues and those with lands generating little or no revenue; and (3) the amounts paid under PILT and the amounts that would be paid if the lands were simply taxed at fair market value. But these issues were not addressed in the 1994 amendments and scarcely have been mentioned in the debate since then.

¹² Inflation adjustments in this report use the implicit price deflator for the Gross Domestic Product, with a base year of 2014. Data for FY2015 use the implicit price deflator for the first three quarters of the year. See U.S. Department of Commerce, Bureau of Economic Analysis, “National Income and Product Accounts,” available at <http://www.bea.gov/national/nipaweb/DownSS2.asp>. (To reach the relevant table, select desired format; select *Section 1*; select tab *10109Ann* for Table 1.1.9. For additional information on methods, contact author.)

**Figure 2. Total PILT Payments, FY1993-FY2016:
Authorized Amount and Appropriation**



Sources: Relevant annual *National Summary* reports and P.L. 114-113. The FY2015 level includes the supplement paid in October 2015. The authorized level for FY2016 is not yet known.

Note: For the same data in tabular format, see **Table A-2**.

PILT Legislation: The 110th to 113th Congresses

The 110th Congress enacted several changes in PILT funding. First, the Continuing Appropriations Act, 2009 (P.L. 110-329), provided funding at the FY2008 level (\$228.9 million) through March 6, 2009. This figure would have constituted roughly 61% of the figure estimated for full payment of the FY2009 authorized level. Subsequently, the Emergency Economic Stabilization Act of 2008¹³ provided for mandatory spending of the full authorized level for five years—FY2008-FY2012. (See **Figure 2**.)

Next, the Moving Ahead for Progress in the 21st Century Act (P.L. 112-141, §100111) extended mandatory spending for PILT to FY2013, without making any other changes to the law. Under the Budget Control Act (P.L. 112-25), PILT was categorized as a nonexempt, nondefense mandatory spending program. As such, it was subject to a 5.1% sequestration of the payments scheduled for FY2013, or \$21.5 million from an authorized payment of \$421.7 million.¹⁴

¹³ P.L. 110-343, Title VI, Section 601(c).

¹⁴ A 2013 Office of Management and Budget (OMB) report gave a slightly smaller initial estimate, based on a lower projected authorized level. See OMB, *OMB Report to the Congress on the Joint Committee Sequestration for Fiscal Year 2013*, March 1, 2013, p. 36, at http://www.whitehouse.gov/sites/default/files/omb/assets/legislative_reports/fy13ombjsequestrationreport.pdf.

PILT Legislation: FY2014

For the FY2014 appropriations cycle, Congress faced two basic choices for FY2104 funding:

- continue the program through an appropriations act, which is constrained by procedural and statutory limits on discretionary spending; or
- provide funding through some measure other than an appropriations act, which would be treated as mandatory spending. With this choice, funding would be subject to certain budget rules that generally require such spending to be offset.

In either case, failure to find an offset would lead to certain procedural hurdles, such as points of order, although Congress sometimes sets aside or waives such points of order.¹⁵

The option for funding through an appropriations act was rejected when PILT funding was not included in the Consolidated Appropriations Act, 2014 (P.L. 113-76), although the Appropriations Committee members expressed support for the program in general.¹⁶ Instead, funding for the program was included in the Agricultural Act of 2014 (P.L. 113-79, §12312; H.Rept. 113-333; also called the 2014 farm bill), which extended mandatory spending for one year.¹⁷ The bill was a net reduction in mandatory spending and therefore offset the increase due to PILT payments. The PILT provision provided county governments with the full formula amount in summer 2014.

PILT Legislation: FY2015

The FY2015 payment, following the tradition of the last several years, was paid in June 2015.¹⁸ The Consolidated and Further Continuing Appropriations Act, 2015 (P.L. 113-235, §11), provided \$372 million in discretionary spending. The Carl Levin and Howard P. “Buck” McKeon National Defense Authorization Act (NDAA; P.L. 113-291) included a provision (§3096) for \$70 million in mandatory spending for PILT. Of this amount, \$33 million was made available in FY2015; the remaining \$37 million was to be made available after the start of FY2016 on October 1, 2015, leaving some doubt as to whether the amount should be considered a late payment for FY2015 or an early payment for FY2016. The Continuing Appropriations Act of 2016 (P.L. 114-53) included a provision (§138) clarifying that the October payment was to be considered a supplement for the FY2015 payment. Through sequestration, the additional \$37 million was reduced by 6.8%, to \$34.5 million. That amount brought the FY2015 total to \$439.5 million, or 97.3% of the full formula amount.

¹⁵ For more on procedural matters raised in an appropriations or budget context, see CRS Report 97-865, *Points of Order in the Congressional Budget Process*, by James V. Saturno.

¹⁶ The Joint Explanatory Statement on the Consolidated Appropriations Act, 2014, states that “the Committees have been given assurances that PILT payments for fiscal year 2014 will be addressed expeditiously by the appropriate authorizing committees of jurisdiction in the House and Senate.” See Rep. Rogers, “Explanatory Statement submitted by Mr. Rogers of Kentucky, Chairman of the House Committee on Appropriations Regarding the House Amendment to the Senate Amendment on H.R. 3547, Consolidated Appropriations Act, 2014,” *Congressional Record*, daily edition, vol. 160, no. 9 (January 15, 2014), pp. H475-H1215. See also <http://docs.house.gov/bills/thisweek/20140113/113-HR3547-JSOM-G-I.pdf>.

¹⁷ For House consideration, H.Res. 465 waived all points of order that might have been brought up and thus no objection could be raised against extension of mandatory spending. Broad waivers of points of order have become increasingly common in recent years.

¹⁸ By statute, payments must be paid before the fiscal year ends.

PILT Legislation: FY2016

For FY2016, PILT payments are included in P.L. 114-113, Division G. The measure contains \$452 million for PILT, an amount that would have been sufficient for full payment in FY2015 but, given the inflation protection in the PILT statute, may be a bit less than the full formula amount for FY2016.

How PILT Works: Five Steps to Calculate Payment

Calculating a particular county's PILT payment first requires answering several questions:

- How many acres of eligible lands are in the county?
- What is the population of the county?
- What were the *previous* year's payments, if any, for all of the eligible lands under the other payment programs of federal agencies?¹⁹
- Does the state have any laws requiring the payments from other federal agencies to be passed through to other local government entities, such as school districts, rather than staying with the county government?
- What was the increase in the Consumer Price Index for the 12 months ending the preceding June 30?

Each of these questions is discussed below, and the following section describes how the questions are used in the computation of each county's payment.

Step 1. How Many Acres of Eligible Lands Are There?

Nine categories of federal lands are identified in the law as eligible for PILT payments:²⁰

1. Lands in the National Park System
2. Lands in the National Forest System
3. Lands administered by BLM
4. Lands in the National Wildlife Refuge System (NWRS) that are withdrawn from the public domain
5. Lands dedicated to the use of federal water resources development projects²¹
6. Dredge disposal areas under the jurisdiction of the U.S. Army Corps of Engineers
7. Lands located in the vicinity of Purgatory River Canyon and Piñon Canyon, Colorado, that were acquired after December 31, 1981, to expand the Fort Carson military reservation

¹⁹ Regardless of how many agencies have jurisdiction over eligible lands in a county, all of the payments specified in 31 U.S.C. §6903(a)(1) are added together and deducted from the following year's single PILT payment. Any other federal lands payments the county may get that are not specified in that provision are not deducted. The formula in 31 U.S.C. §6903 puts a ceiling on the total PILT payment for all of the eligible land in the county.

²⁰ See 31 U.S.C. §6901. The law refers to these nine categories of lands as "entitlement lands," and the term is used throughout the act. However, because *entitlement* is a word that is used in a very different, and potentially confusing, context in the congressional budget process, this report will refer to these lands as *eligible lands*.

²¹ These lands are under the jurisdiction of the Bureau of Reclamation, for the most part.

8. Lands on which are located semi-active or inactive Army installations used for mobilization and for reserve component training
9. Certain lands acquired by DOI or the Department of Agriculture under the Southern Nevada Public Land Management Act (P.L. 105-263)

Section 6904/6905 Payments

Two sections of the PILT law (31 U.S.C. §6904 and §6905) provide special payments for limited categories of land, for limited periods. These are described in the FY2015 *National Summary* (p. 12) as follows:

Section 6904 of the Act authorizes payments for lands or interests therein, which were acquired after December 31, 1970, as additions to the National Park System or National Forest Wilderness Areas. To receive a payment, these lands must have been subject to local real property taxes within the five year period preceding acquisition by the Federal government. Payments under this section are made in addition to payments under Section 6902. They are based on one percent of the fair market value of the lands at the time of acquisition, but may not exceed the amount of real property taxes assessed and levied on the property during the last full fiscal year before the fiscal year in which [they were] acquired. Section 6904 payments for each acquisition are to be made annually for five years following acquisition, unless otherwise mandated by law....

Section 6905 of the Act authorizes payments for any lands or interests in land owned by the Government in the Redwood National Park or acquired in the Lake Tahoe Basin under the Act of December 23, 1980 (P.L. 96-586, 94 Stat. 3383). Section 6905 payments continue until the total amount paid equals 5 percent of the fair market value of the lands at the time of acquisition. However, the payment for each year cannot exceed the actual property taxes assessed and levied on the property during the last full fiscal year before the fiscal year in which the property was acquired by the Federal government.

In FY2015, the Section 6904/6905 payments totaled \$620,340, or 0.14% of the total program. California counties received the largest amount (\$110,610). Fourteen states and three territories had no counties receiving payments under these two sections in FY2015. The states were Arkansas, Hawaii, Illinois, Iowa, Kansas, Louisiana, Mississippi, Missouri, Nebraska, Oklahoma, Rhode Island, South Dakota, Wisconsin, Wyoming, and the territories were Guam, Puerto Rico, and the Virgin Islands.

The payments under Section 6904 cease five years after the acquired land is incorporated into a national park unit or a National Forest Wilderness Area. As a result, some counties experience a sudden drop in their PILT payment after five years.

In addition, if any lands in the above categories were exempt from real estate taxes at the time they were acquired by the United States, those lands are not eligible for PILT, except in three circumstances:

1. Lands received by the state or county from a private party for donation to the federal government within eight years of the original donation
2. Lands acquired by the state or county in exchange for land that was eligible for PILT
3. Lands in Utah acquired by the United States if the lands were eligible for a payment in lieu of taxes program from the state of Utah

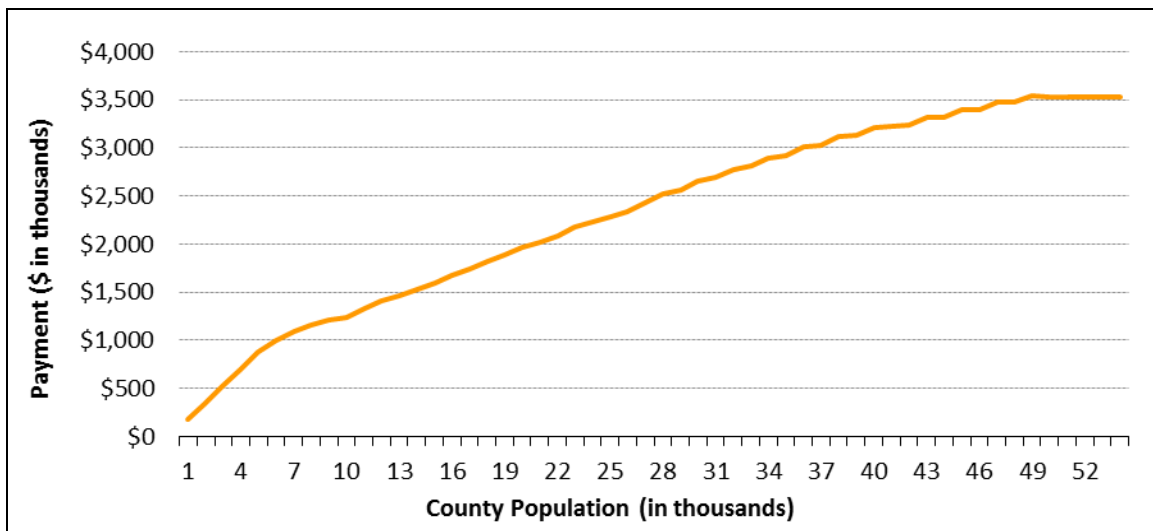
Only the nine categories of lands (plus the three exceptions) on this list are eligible for PILT payments; other federal lands—such as military bases, post offices, federal office buildings, and the like—are not eligible for payments under this statute. The exclusion of lands in the NWRS that are acquired is an interesting anomaly, and it may reflect nothing more than the fact that the House and Senate committees with jurisdiction over most federal lands did not have jurisdiction over the NWRS as a whole at the time P.L. 94-565 was enacted.²²

²² At the time, jurisdiction over the National Wildlife Refuge System (NWRS) generally was in one committee, while jurisdiction over public domain lands was within the jurisdiction of different committees. This was true in both the House and Senate. The committees considering PILT had no jurisdiction over the acquired lands within the NWRS.

Step 2. What Is the Population of the County?

The law restricts the payment that a county may receive based on population by establishing a ceiling payment that rises with increasing population. (See **Figure 3**.) Counties are paid at a rate that varies with population; counties with low populations are paid at a higher rate per person and populous counties are paid less per person.²³ For example, for FY2015, a county with a population of 1,000 people could not receive a PILT payment of more than \$176.67 per person (\$176,670); a jurisdiction with a population of 30,000 could not receive a payment over \$2.6 million (30,000 people × \$88.36 per person). And no county can be credited with a population of more than 50,000. Consequently, in FY2015, at the authorized payment level of \$70.67 per person, no county could receive a PILT payment over \$3.5 million (50,000 people × \$70.67 per person), regardless of population. **Figure 3** shows the relationship between the population of a county and the maximum PILT payment.

Figure 3. Ceiling Payments Based on County Population Level, FY2015



Source: Calculations based on the FY2015 *National Summary*, p. 14.

Note: With the ceiling limit, no county, regardless of population size, could receive more than \$3.53 million for FY2015.

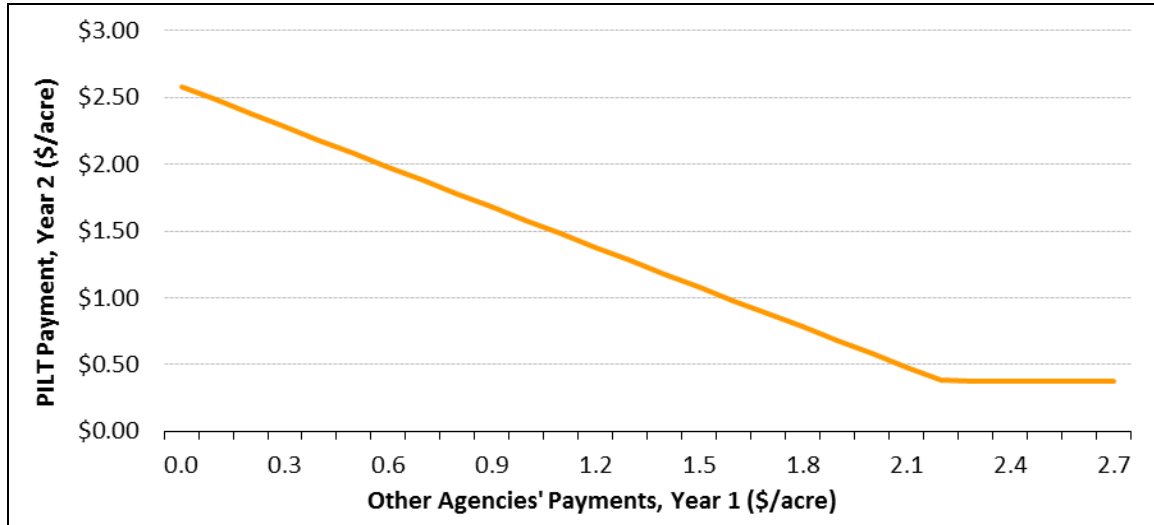
Step 3. Are There Prior-Year Payments from Other Federal Agencies?

Federal land varies greatly in revenue production. Some lands have a large volume of timber sales or recreation concessions such as ski resorts, and others generate no revenue at all. Some federal lands have payment programs for state or local governments, and these payments may vary markedly from year to year. To even out the payments among counties and prevent grossly disparate payments, Congress provided that the previous year’s payments on eligible federal lands from specific payment programs to counties would be subtracted from the PILT payment of the following year. So for a hypothetical county with three categories of eligible federal land, one paying the county \$1,000, the second \$2,000, and the third \$3,000, then \$6,000 would be subtracted from the following year’s PILT payment. Most counties are paid under this offset

²³ See 31 U.S.C. §6903 for payment schedule.

provision, which is called the *standard rate*. In **Figure 4**, the standard rate is shown by the left, sloping portion of the line, indicating that as the sum of the payment rates from other agencies increases, the PILT payment rate declines on a dollar-for-dollar basis.

Figure 4. PILT Payment Level as a Function of Specific Prior Payments (FY2015)



Source: Calculations based on payment levels cited in the FY2015 *National Summary*.

Note: With the minimum payment provision, no county, however large the prior-year payment, could receive less than \$0.37/acre from PILT for FY2015.

At the same time, Congress wanted to ensure that each county with eligible lands got *some* PILT payment, however small, even if the eligible lands produced substantial county payments from other agencies. If the county had payments from three federal payment programs of \$1,000, \$2,000, and \$1 million, for instance, subtracting \$1.003 million from a small PILT payment would produce a negative number—meaning no PILT payment to the county at all. In that case, a *minimum rate* applies, which does not deduct the other agencies’ payments. In **Figure 4**, the flat portion to the right shows that, after the other agencies’ payments reach a certain level (\$2.25 per acre in FY2015), the rate of the PILT payment remains fixed (at \$0.37 per acre in FY2015).

The payments made in prior years that count against future PILT payments are specified in law.²⁴ Any other payment programs beyond those specified would not affect later PILT payments. These specified payments are shown in **Table A-3**. Eligible lands under some agencies (e.g., National Park Service and Army Corps of Engineers) have no payment programs that affect later PILT payments.

Step 4. Does the State Have Pass-Through Laws?

Counties may receive payments above the calculated amount described above, depending on state law. Specifically, states may require that the payments from federal land agencies pass through the county government to some other entity (typically a local school district) rather than accrue to the county government itself. When counties in a *pass-through* state are paid under the formula that deducts their prior-year payments from other agencies (e.g., from the Refuge Revenue Sharing Fund [RRSF; 16 U.S.C. §715s] of FWS or the Forest Service [FS] Payments to States

²⁴ 31 U.S.C. §6903(a)(1).

program [16 U.S.C. §500]),²⁵ the amount paid to the other entity is *not* deducted from the county's PILT payments in the following year. According to DOI:

Only the amount of Federal land payments actually received by units of government in the prior fiscal year is deducted. If a unit receives a Federal land payment, but is required by State law to pass all or part of it to financially and politically independent school districts, or any other single or special purpose district, payments are considered to have not been received by the unit of local government and are not deducted from the Section 6902 payment.²⁶

For example, if a state requires all counties to pass along some or all of their RRSF payments from FWS to the local school boards, the amount passed along is not deducted from the counties' PILT payments for the following year.²⁷ Or if two counties of equal population in two states each received \$2,000 under the FS Payments to States program, and State #1 pays that amount directly to the local school board but State #2 does not, then under this provision the PILT payment to the county in State #1 will not be reduced in the following year but that of the county in State #2 will drop by \$2,000. State #1 will have increased the total revenue coming to the state and to each county by taking advantage of this feature.²⁸

Consequently, the feature of PILT that apparently was intended to even out payments among counties (at least of equal population size) may not have that result if the state takes advantage of this pass-through feature.²⁹ Each governor is required to report annually to the Secretary of the Interior with a statement of the amounts actually paid to each county government under the relevant federal payment laws.³⁰ DOI also cross-checks each governor's report against the records of the payment programs of federal agencies.

In addition, there is a pass-through option for the PILT payment itself. A state may require that the PILT payment go to a smaller unit of government, contained within the county (typically a school district).³¹ In this case, one check is sent by the federal government to the state for distribution by the state to these smaller units of government. The distribution must occur within 30 days. To date, Wisconsin is the only state to have elected to pass through PILT payments.

Step 5. What Is This Year's Consumer Price Index?

A provision in the 1994 amendments to PILT adjusted the authorization levels for inflation. The standard and minimum rates, as well as the payment ceilings, are adjusted each year. The PILT statute requires that "the Secretary of the Interior shall adjust each dollar amount specified in subsections (b) and (c) to reflect changes in the Consumer Price Index published by the Bureau of

²⁵ Under 16 U.S.C. §500, these payments are made to the states or territories and must be used for schools or roads in the counties in which the national forests are located. Each state has its own rules on the mechanics of that transfer, on the proportion to be used for roads and the proportion for schools. Some states direct that the education portion be given directly to school boards. For more information see CRS Report R40225, *Federal Land Management Agencies: Background on Land and Resources Management*, coordinated by Carol Hardy Vincent.

²⁶ FY2015 *National Summary*, p. 10.

²⁷ 31 U.S.C. §6907.

²⁸ Note that even though a county as a whole may benefit from this provision, the county government *itself* will not, because it forgoes the revenues given directly to its school system.

²⁹ However, the Supreme Court has held that states cannot direct counties to spend their PILT payments (i.e., payments under the DOI-managed program described in this report) for particular purposes once they have actually received their PILT payment. *Lawrence County v. Lead-Deadwood School District*, 469 U.S. 256 (1985).

³⁰ 31 U.S.C. §6903(b)(2).

³¹ 31 U.S.C. §6907.

Labor Statistics of the Department of Labor, for the 12 months ending the preceding June 30.”³² This is an unusual degree of inflation adjustment; no other federal land agency’s payment program has this feature. But as will be shown below, increases in the authorization do not necessarily lead to a commensurate increase in the funds received by the counties.

Putting It All Together: Calculating a County’s Payment

Knowing the answers to these questions, one then can make two comparisons to calculate the authorized payment level for a county. (Figure 5 shows a flow chart of the steps in these comparisons.)

Alternative A. Which is *less*: the county’s eligible acreage multiplied by \$2.62 per acre or the county’s ceiling payment based on its population? Pick the lesser of these two numbers. From it, subtract the previous year’s total payments for these eligible lands under specific payment or revenue-sharing programs of the federal agencies that control the eligible land.³³ The amount to be deducted is based on an annual report from the governor of each state to DOI. This option is called the *standard rate*.

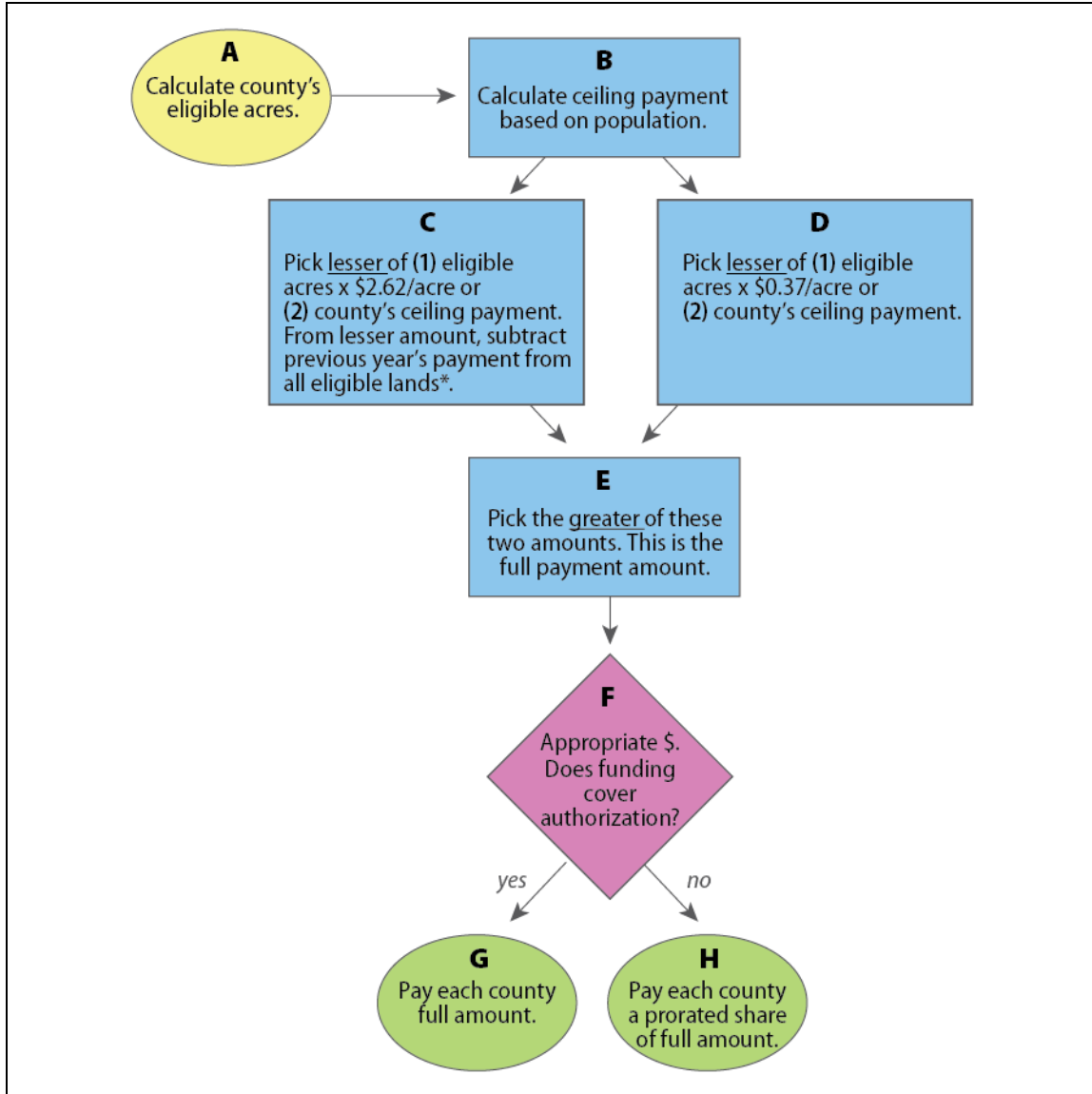
Alternative B. Which is *less*: the county’s eligible acreage multiplied by \$0.37 per acre or the county’s ceiling payment based on its population? Pick the lesser of these two. This option is called the *minimum provision* and is used in counties that received relatively large payments (more than \$2.25 per acre for FY2015) from other federal agencies in the previous year.

The county is authorized to receive whichever of the above calculations—(A) or (B)—is *greater*. This calculation must be made for all counties individually to determine the national authorization level. From the program’s inception through FY2007, the authorized payments were subject to annual appropriations. If appropriations were insufficient for full funding, each county received a pro rata share of the appropriation. After passage of P.L. 110-343 and P.L. 112-141, each county received the full authorized amount for FY2008-FY2012; as a result of sequestration (P.L. 112-25), each county received 94.8% of the authorized amount for FY2013. With the enactment of P.L. 113-79, counties received the full authorized amount in FY2014. The additional \$34.5 million provided in October 2015 brought the FY2015 total to 97.3% of the full formula amount.

³² 31 U.S.C. §6903(d).

³³ Payments under the Secure Rural Schools program for Forest Service lands (but not BLM lands) are included among those prior-year payments to be deducted. See CRS Report R41303, *Reauthorizing the Secure Rural Schools and Community Self-Determination Act of 2000*, by Katie Hoover.

Figure 5. Steps in Calculating PILT for Eligible Federal Lands
(FY2015 payment levels)



Source: Prepared by CRS, based on PILT statute (31 U.S.C §§6901-6907).

Notes: The payments (marked *) are the specific payments for federal lands. The amount subtracted is reduced in states with pass-through laws.

The standard rate, with its offset between agency-specific payments and PILT payments, still does not guarantee a constant level of federal payments to counties because of the time lag in determining PILT payments. Federal payments for a given fiscal year generally are based on the receipts of the prior year. PILT payments of the *following* fiscal year are offset by these payments.

The combination of specific payments and PILT in the standard rate means that reductions (or increases) in those other payments in the previous year could be offset exactly by increases (or reductions) in PILT payments. However, provided the county's population is not so low as to affect the outcome, PILT payments could not fall below \$0.37 per acre for FY2015 (see Alternative B, above), so the full offset occurs only when the other federal payments in the

previous year total less than \$2.22 per acre (i.e., the maximum payment of \$2.62 per acre minus the \$0.37 per acre minimum payment from PILT).³⁴

To illustrate, consider a county whose only eligible federal lands are under FS jurisdiction. If the federal receipts on the FS lands dropped in FY2013 (compared with FY2012), authorized FS payments in FY2014 would fall. Authorized PILT payments will therefore increase to offset the drop—in FY2015. (This example assumes the PILT payment is calculated under the standard rate.) The counties will be authorized to receive at least \$2.62 per acre from FS payments and PILT payments combined,³⁵ but the two payments would not come in the same year. Consequently, if FS payments are falling from year to year, the combined payments in the given year would be less than \$2.62 per acre, but if FS payments are rising, the authorized combined payment in the given year would be more than \$2.62 per acre.

National Totals

Because of the need for annual data, a precise dollar figure cannot be given in advance for each year's PILT authorization level.³⁶ Information from all 2,230 counties with eligible land in FY2015 was needed before an aggregate figure for the nation could be calculated for the most recent payment. As a result, no figure can be given yet for the amount required for full funding in FY2016. Consequently, the FY2016 appropriation contained in P.L. 114-113 is based on an estimate of the authorized amount.

Current Issues

Although the enactment of six years of mandatory spending put the issue of full funding to rest for a time, county governments show strong support for continuing the mandatory spending feature for PILT. This question of mandatory spending has been the biggest issue facing the program from the 112th through the 114th Congresses. The question of funding for the program was addressed for the FY2015 payment and through an appropriation of \$452.0 million for FY2016. At the same time, with congressional debate over spending levels in general, support for greater or mandatory spending for PILT in the future may compete with proposals to modify or even eliminate PILT as a means of reducing federal deficits.

Congressional interest, after the 1994 revisions to PILT, has focused on the three areas cited above: (1) whether to approve mandatory spending (either temporary or permanent) at the full amount or some fixed level; (2) whether to make the opposite choice of reducing the program, either through lower discretionary appropriations or by changing the PILT formula; and (3) whether to add or subtract any lands from the list of those now eligible for PILT payments.³⁷ In

³⁴ To illustrate more concretely, imagine each county as a large bucket whose sides are marked off in "\$/acre." PILT, in effect, checks the payment already in the bucket from other agencies and then adds at least enough money to the bucket to bring it to the \$2.62/acre mark. Moreover, PILT adds 37¢/acre, regardless of the amount in the bucket already. Consequently, the money bucket could reach levels well above \$2.62/acre, with the last 37¢ added by PILT. The county population ceilings might then be thought of as holes in the sides of some of the buckets that prevent the buckets from filling beyond a certain level for that bucket (i.e., county).

³⁵ An exception would occur if the county's population is so small that the county is affected by the PILT ceiling on payments due to population.

³⁶ DOI does not include estimated full payment levels in its annual budget justification to Congress. It confines itself to the Administration's request for the year. However, DOI's annual report of current year PILT payments to counties includes this information.

³⁷ A total of \$439.5 million was appropriated for PILT in FY2015; from this figure, \$0.4 million was deducted for (continued...)

contrast, FY2015 discretionary appropriations for DOI totaled \$10.7 billion, or about 26 times the PILT program that year. However, for a relatively small fraction of the federal or even departmental budget, PILT garners considerable attention for local reasons: (1) according to the FY2015 *National Summary*, 2,230 counties had lands eligible for PILT payments; (2) the average payment per county (many of which are sparsely populated) was \$196,899; (3) although some counties with eligible lands received no payment (because they have very few federal lands and PILT makes no payments of less than \$100), many received over \$1 million and 24 counties received over \$3 million.³⁸ The resulting impact on budgets of local governments helps generate interest despite the comparatively small size of the PILT program. As PILT funding reverts to discretionary spending, counties with large federal land holdings may return to significant fiscal uncertainty.

Several more specific issues also are being debated in Congress or within county governments. Among them are the inclusion of Indian or other categories of lands; tax equivalency, especially for eligible urban lands; and payments affecting the NWRS.

Inclusion of Indian Lands

The inclusion of other lands (e.g., military lands generally or those of specific agencies such as the National Aeronautics and Space Administration) under the PILT program has been mentioned from time to time, and some counties with many acres of nontaxable Indian lands within their boundaries have long supported adding Indian lands to the list of lands eligible for PILT. Their primary arguments are that these lands receive benefits from the county, such as road networks, but Indian residents do not pay for these benefits with property taxes. At the same time, the federal government does not actually own these lands.

The complexity of the PILT formula makes it very difficult to calculate the consequences of such a move, either for authorization levels or appropriation levels. Additionally, Congress would have to decide what sorts of Indian lands would be eligible for such payments and a variety of other complex issues.³⁹ If some categories of Indian lands were to be added to those lands already eligible for PILT, Congress might wish to limit payments to counties with more than some minimum percentage of Indian lands within their borders. Regardless, even a very restrictive definition of *Indian lands* seems likely to add many millions of acres to those already eligible.

(...continued)

administrative expenses.

³⁸ *National Summary*, FY2015. The 24 counties were in 8 states: Alaska (1 county), Arizona (5 counties), California (4 counties), Colorado (1 county), Nevada (4 counties), New Mexico (4 counties), Utah (3 counties), and Wyoming (2 counties).

³⁹ The many classifications of *Indian lands* include trust lands, restricted lands, and fee (private) lands, both on and off reservations. *Trust lands* are lands held by the federal government in trust for an Indian tribe or individual. *Restricted lands* are lands held by an Indian tribe or individual but subject to federal restrictions on alienation (e.g., sale) or encumbrance (e.g., mortgaging). Most, but by no means all, Indian trust and restricted lands are on Indian reservations. Trust and restricted lands, whether on or off reservations, are not subject to state or local land taxes. *On-reservation* Indian fee lands may or may not be subject to state and local land taxes, depending on the federal statute under which the land was fee patented. *Off-reservation* Indian fee lands generally are subject to state and local land taxes. (Indian reservations may also include non-Indian fee lands, which are subject to state and local taxation.) Alaskan Native corporation lands (none of which are trust lands) are affected by limits on state taxation in the Alaska Native Claims Settlement Act (P.L. 92-203). Congress would have to decide which of these many classifications of Indian lands would become eligible for PILT benefits. Further, Congress might choose to distinguish between Indian lands that have never been taxed by a county or state versus those Indian lands that once were taxable but were acquired into nontaxable status after some specified date.

Even if the criteria for eligibility were determined, it still would be difficult to anticipate the effect on authorization levels. To paint an extreme example, if all of the eligible Indian lands were in counties whose PILT payments already were capped due to the population ceiling, inclusion of Indian lands would have no effect on PILT authorization levels.

If mandatory spending of the full formula amount is in place, appropriations would go up to fund the newly eligible lands. If spending is not mandatory and annual appropriations are less than the authorized level, each county would receive a pro rata share of the authorized full payment level. Individual counties whose eligible acres had jumped markedly with the inclusion of Indian lands might receive substantially more than in the past. Other counties (particularly those with few or no eligible Indian acres) would receive a smaller fraction of the authorized amount as limited dollars would be distributed among more lands.

Inclusion of Urban Lands and Tax Equivalency

Some observers have wondered whether urban federal lands are included in the PILT program. The response is that urban lands are not *excluded* from PILT under the current law. For example, in FY2015, the counties in which Sacramento, Chicago, and Cleveland are found, as well as the District of Columbia, all received PILT payments (see **Table 1**), although the property tax on similar, but nonfederal, lands likely would have been substantially greater.

Table 1. Authorized PILT Payments to Selected Urban Counties, FY2015

County	Eligible Acres	FY2015 Appropriated Amount (\$)
Sacramento County (CA)	9,618	24,505
Cook County (IL)	139	354
Cuyahoga County (OH)	2,594	6,609
Arlington County (VA)	27	0 ^a
District of Columbia	6,980	17,946

Source: *National Summary*, FY2015, including October 2015 supplement.

Notes: The urban counties and the District of Columbia were selected to show a wide range in the amount of eligible lands and resulting payments.

- a. Under the PILT formula, Arlington County's 27 eligible acres (all under the National Park Service) would generate a payment of \$71. However, under the law, no payment is made for amounts under \$100.

Eastern counties, which tend to be small, rarely have both large populations *and* large eligible acreage in the same county. By contrast, western counties tend to be very large and may have many eligible acres, and some, like Sacramento, may have large populations as well. Furthermore, as the cases of Arlington County and the District of Columbia illustrate, PILT payments are by no means acting as an equivalent to property tax payments. If the 6,980 acres in the District of Columbia or the 27 acres in Arlington County were owned by taxable entities, those acres would result in much more than \$17,946 or \$0, respectively, in property taxes.⁴⁰

Because the formula in PILT does not reflect property taxes, counties such as these might support a revised formula that would approach property tax payments.

⁴⁰ For a concrete example, the 2014 real property tax rate in Arlington County was \$0.996 per \$100 of assessed valuation. At that rate, to generate \$71 in property taxes, the county's assessed value of the 27 acres would have been \$7,128, or about \$264/acre. Actual assessed values in Arlington County tend to be significantly higher, by orders of magnitude.

National Wildlife Refuge System Lands

As noted above, NWRS lands that were withdrawn from the public domain are eligible for PILT, and those that were acquired are not. In addition, the National Wildlife Refuge Fund (NWRF, also called the Refuge Revenue-Sharing Fund, or RRSF) relies on annual appropriations for full funding. For FY2015, payments for NWRF were approximately 23% of the authorized level. For refuge lands eligible for PILT, some or perhaps all of the NWRF payment will be made up for in the following year's PILT payment, but this will not occur for acquired lands because they are not eligible for PILT. Congress may consider making all refuge lands eligible for PILT and/or providing mandatory spending for NWRF, as it has for PILT. Eastern counties could be the largest beneficiaries of such a change, although some western states also may have many NWRS acres that currently are not eligible for PILT. (See **Table 2** for selected state examples.) Adding the 9.7 million acres of NWRS lands under the primary jurisdiction of FWS but currently ineligible for PILT would increase PILT lands by about 1.6%.

Table 2. NWRS Acres Eligible for PILT in Selected States, FY2014

State	NWRS Acres Reserved from Public Domain	Total NWRS Acres	Percent Eligible for PILT
Alabama	0	71,573	0.0
Arizona	1,553,465	1,743,846	89.0
Iowa	334	120,586	0.3
Maine	0	69,744	0.0
Montana	433,135	1,539,372	28.1
Ohio	77	9,446	0.8
Oregon	266,475	591,020	45.0

Source: Compiled from *Annual Report of Lands Under Control of the U.S. Fish and Wildlife Service As of September 30, 2014* (the most recent year available).

Notes: States were selected to show a wide range in NWRS acreage and amount of public domain lands. NWRS = National Wildlife Refuge System; PILT = Payments in Lieu of Taxes.

County Uncertainty and Fiscal Effects on Counties⁴¹

The PILT program, as a mandatory spending program, provided a relatively certain flow of funds to recipient jurisdictions. Some observers and policymakers are concerned that returning PILT to discretionary spending or eliminating the program would destabilize the fiscal structure of some jurisdictions receiving PILT payments. Nationally, however, the relative size of the PILT payments would seem to mitigate the impact and PILT reductions would not seem to have a measurable fiscal impact on most county budgets that receive PILT transfers. Locally, the impacts may be greater, perhaps substantially.

Reliance on property taxes is important for most counties. Nationwide, in FY2012, local property taxes (for counties, cities, and special districts) comprised roughly 47.2% of own-source revenue or just over \$446 billion in total revenues.⁴² However, in FY2015, the PILT program was very

⁴¹ This section prepared by Steven Maguire, section research manager, Government Finance and Taxation Section (7-7841, smaguire@crs.loc.gov).

⁴² Own-source revenue is all revenue that is *not* a transfer from the state or federal government. Data are from the (continued...)

much smaller: the appropriated \$439.5 million in PILT payments is roughly 0.1% of property tax revenue nationally.⁴³ For counties that receive a significantly larger PILT payment, however, the impact would be greater. First, for the 24 counties that received over \$3 million in FY2015, the government services provided by the county could be adversely affected in the near term (although restructuring the property tax or raising other local fees or taxes could likely compensate for the reduced federal payment). Second, smaller payments also would be important in low-property value, low-population counties with relatively greater shares of federally owned land.

(...continued)

Jeffery L. Barnett, Cindy L. Sheckells, Scott Peterson, and Elizabeth M. Tydings, "State and Local Government Finance Summary: 2012," Appendix Table A-1, Governments Division Briefs, U.S. Census Bureau, December 17 2014, at http://www2.census.gov/govs/local/summary_report.pdf. The report contains the most recent data available.

⁴³ It is important to note that 30% of all counties in the country have no lands eligible for PILT and thus the two figures are not entirely comparable. Specifically, it is not clear what fraction of the own-source revenue is produced in the 70% of counties with lands eligible for PILT payments. For more on the number of counties by state, see U.S. Census Bureau, "2012 Census of Governments: Organization Component Estimates."

Appendix. PILT Data Tables

The first two tables below show the data presented in **Figure 1** and **Figure 2**. The third shows the agency payments that offset payments under PILT in the following year.

**Table A-1. Total PILT Payments, FY1993-FY2016:
Appropriations in Current and Inflation-Adjusted 2014 Dollars**
(\$ in millions)

Year	Appropriation	Inflation-Adjusted Appropriation
1993	103.2	154.7
1994	104.1	152.8
1995	101.1	145.3
1996	112.8	159.3
1997	113.1	157.0
1998	118.8	163.1
1999	124.6	168.5
2000	134.0	177.2
2001	199.2	257.6
2002	209.4	266.7
2003	218.6	272.9
2004	224.7	273.0
2005	226.8	267.0
2006	232.5	265.5
2007	232.5	258.7
2008	367.2	400.7
2009	381.6	413.2
2010	358.1	383.1
2011	375.2	393.3
2012	393.0	404.7
2013	400.2	406.0
2014	436.9	436.9
2015	439.5 ^a	434.1
2016	452.0	Unknown

Sources: Current dollars from each annual *National Summary*. Inflation adjustment is based on chain-type price index. Adjustment for 2015 is based on the index for the first three quarters of the year. FY2016 is presented in current dollars.

Notes: For the same data in a bar chart, see **Figure 1**.

- a. A total of \$439.5 million was appropriated for PILT in FY2015; from this figure, \$0.4 million was deducted for administrative expenses.

**Table A-2. Total PILT Payments, FY1993-FY2016:
Authorized Amount and Appropriations**
(\$ in millions)

Year	Authorized	Appropriated
1993	103.2	103.2
1994	104.4	104.1
1995	130.5	101.1
1996	165.1	112.8
1997	212.0	113.1
1998	260.5	118.8
1999	303.7	124.6
2000	317.6	134.0
2001	338.6	199.2
2002	350.8	209.4
2003	324.1	218.6
2004	331.3	224.7
2005	332.0	226.8
2006	344.4	232.5
2007	358.3	232.5
2008	367.2	367.2
2009	381.6	381.6
2010	358.1	358.1
2011	375.2	375.2
2012	393.0	393.0
2013	421.7	400.2
2014	436.9	436.9
2015	451.5	439.5 ^a
2016	Unknown	452.0

Sources: Relevant annual *National Summary* reports.

Notes: For the same data in a bar chart, see **Figure 2**.

- a. A total of \$439.5 million was appropriated for PILT in FY2015; from this figure, \$0.4 million was deducted for administrative expenses.

Table A-3. Prior-Year Payment Laws That Are Offset Under Next PILT Payment

Federal Agency Making Payment	Short Title of Law or Common Name	P.L. or Date	U.S. Stat.	U.S. Code	Lands Eligible for Payments	Payment Rate
Forest Service	25% payments or Payments to States	Act of May 23, 1908 (ch. 192, §13)	35 Stat. 260	16 U.S.C. §500	All national forest (NF) lands	25% of gross receipts to state for roads and schools in counties
	None	Act of June 20, 1910 (ch. 310)	36 Stat. 557, §6	Not codified	NF lands in AZ and NM	Proportion of lands in NFs reserved for schools times proceeds from sales in NF
	None	Act of June 22, 1948 (ch. 593, §5); Act of June 22, 1956 (ch. 425, §2)	62 Stat. 570, 70 Stat. 328	16 U.S.C. §577g, §577g-1	Lands in Superior NF, MN	0.75% of appraised value (in addition to 25% payments above)
	Mineral Leasing Act for Acquired Lands (§6)	Act of Aug. 7, 1947	61 Stat. 915	30 U.S.C. §355	NF lands with mineral leasing	50% of mineral leasing revenues to states for counties
	Material Disposal Act	Act of July 31, 1947 (§3)	61 Stat. 681	30 U.S.C. §603	Net revenues from sale of land and materials	Varies depending on type of receipt and agency
	Secure Rural Schools and Community Self-Determination Act ^a	P.L. 106-393, as amended	114 Stat. 1607, as amended	16 U.S.C. §§7101 et seq.	NF lands (but not lands under Land Utilization Program [LUP] or National Grasslands) if this option is chosen by county instead of 25% payments	Complex formula; see CRS Report R41303, <i>Reauthorizing the Secure Rural Schools and Community Self-Determination Act of 2000</i> , by Katie Hoover
	Bankhead-Jones Farm Tenant Act	Act of July 22, 1937 (ch. 513, §33)	50 Stat. 526	7 U.S.C. §1012	National Grasslands and LUP lands managed by FS ^b	25% of revenues for use of lands to states
Bureau of Land Management	Mineral Lands Leasing Act	Act of February 25, 1920 (ch. 85, §35)	41 Stat. 450	30 U.S.C. §191	Public lands	50% of leasing revenues to states for counties
	Taylor Grazing Act	Act of June 28, 1934 (ch. 865, §10)	48 Stat. 1273	43 U.S.C. §315i	Public lands	12.5% of grazing receipts to states for counties

Federal Agency Making Payment	Short Title of Law or Common Name	P.L. or Date	U.S. Stat.	U.S. Code	Lands Eligible for Payments	Payment Rate
	Bankhead-Jones Farm Tenant Act	Act of July 22, 1937 (ch. 513, §33)	50 Stat. 526	7 U.S.C. §1012	National Grasslands and LUP lands managed by BLM	25% of revenues for use of lands to states
	Mineral Leasing Act for Acquired Lands (§6)	Act of Aug. 7, 1949	61 Stat. 915	30 U.S.C. §355	Public lands with mineral leasing	50% of mineral leasing revenues to states for counties
	Material Disposal Act	Act of July 31, 1947 (§3)	61 Stat. 681	30 U.S.C. §603	Net revenues from sale of land and materials	Varies depending on type of receipt and agency
Fish and Wildlife Service	Refuge Revenue Sharing Act	Act of June 15, 1935 (ch. 261, §401(c)(2))	49 Stat. 383	16 U.S.C. §715s(c)(2)	Public domain lands in NWRS ^c	25% of net receipts from timber, grazing, and mineral sales directly to county; remaining 75% to counties under other formulas
Federal Energy Regulatory Commission	Federal Power Act	Act of June 10, 1920, (ch. 285, §17)	41 Stat. 1072	16 U.S.C. §810	NF and public lands with occupancy and use for power projects	37.5% of revenues from licenses for occupancy and use to states for counties

Sources: 31 U.S.C. §6903(a)(1), *National Summary*, FY2015, p. 13. The latter document has typographical errors that are corrected here, as noted. Because the various payment laws are identified in some documents by title, in others by a U.S. Code citation, and in still others by the Statutes at Large, date, or Public Law, all of these are cited here, where they exist.

- a. When payments are made for lands under FS jurisdiction for the Secure Rural Schools (SRS) program, the payments result in a reduction (offset) in the following year's PILT payment. However, if the lands are under BLM jurisdiction, no offset is made in the following year's PILT payment. All BLM lands eligible for SRS payments are in Oregon.
- b. The table shown in *National Summary*, FY2015, p. 13, indicates that these payments are made only to BLM lands and omits mention of FS lands. However, the majority of Bankhead-Jones lands are in the FS National Grasslands, and DOI makes payments for these lands regardless of which of the two agencies own them. Therefore, this payment is shown in the table for both agencies.
- c. Acquired lands in the National Wildlife Refuge System (NWRS) are not eligible for PILT payments. See text.

Author Contact Information

M. Lynne Corn
Specialist in Natural Resources Policy
lcorn@crs.loc.gov, 7-7267